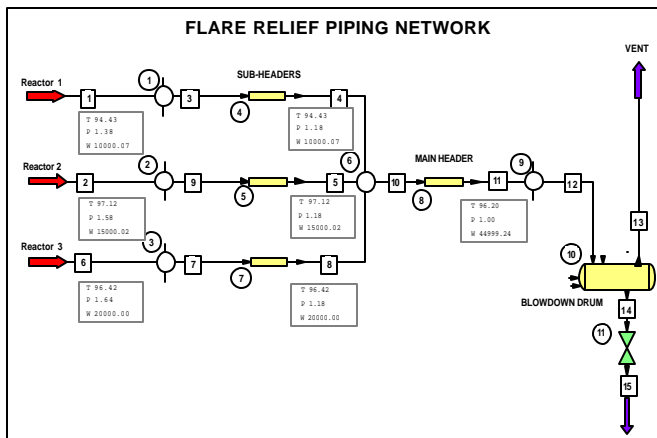


CHEMCAD™ SAFETY NET

*Focusing the power
of CHEMCAD on
plant safety and
piping networks.*

CC-SAFETY NET is an engineering software tool designed to simulate the steady state behavior of pressure relief devices and piping systems under actual flowing conditions. It also provides powerful facilities for environmental audits in the prediction of volatile organic compound (VOC) emissions to atmosphere at equilibrium conditions.



FLARE SYSTEMS:

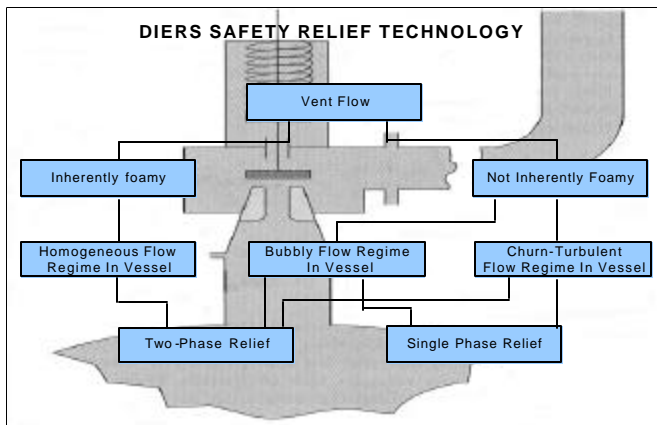
CC-SAFETY NET provides facilities for the design and analysis of flare relief systems including all system components. These facilities include:

- Simulation of the piping network including the blowdown drum. Flow can be vapor, liquid, or two-phase, and critical flow is computed and limiting.
- Identification of the worst relieving case using case studies.
- Optimization of the system using the of sensitivity analysis.
- Sizing (and costing) of system equipment including pipes, relief valves, and pressure vessels.

SAFETY RELIEF VALVES AND RUPTURE DISKS:

The **DIERS** (Design Institute for Emergency Relief Systems) facility of **CC-SAFETY NET** provides the user with the latest technology in the sizing and analysis of safety relief vents in emergency situations. This technology is complex and difficult for the average engineer to understand and apply. **CC-SAFETY NET** ensures that you get reliable results because:

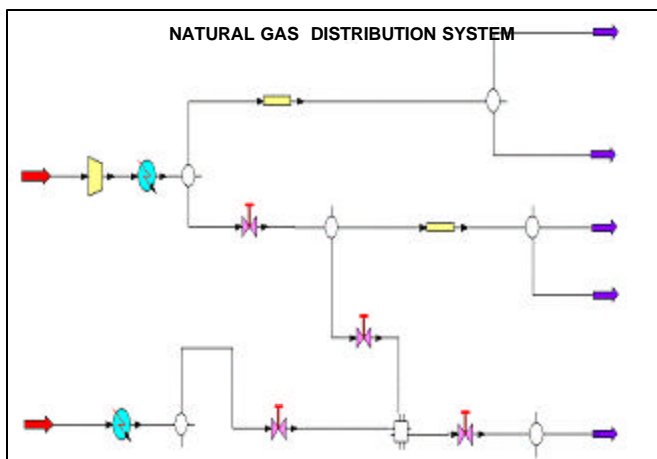
- Chemstations has spent years studying DIERS and consulting with experts in the field. We are thus able to provide you with a tool which is not only comprehensive and accurate, but which also separates the useable from the purely theoretical providing you with a practical, real world tool.
- **CC-SAFETY NET's** **DIERS** facility has been used in the field for years.



PIPING NETWORKS:

CC-SAFETY NET will simulate any type of steady state piping network. Flow loops, distribution systems, and collection networks can all be assembled and simulated in any combination. These networks can also include:

- Pumps, compressors, expanders, valves, pipes, fittings, heat exchangers, and pressure vessels.
- Performance curves for pumps and compressors.
- Critical flow restrictions.
- Sizing and costing of all components.



Visit our website at:
www.chemstations.net



GENERAL FEATURES

- Graphical user interface with "Coach" facility for guided input.
- Extensive on-line Help available.
- Extensive drawing facilities
- Fully integrated with CHEMCAD and all other CHEMCAD modules.
- OLE, COM, and Visual Basic compatible.
- Interfaces to Lotus 1-2-3, Excel, and AutoCAD (DXF), Word, Wordpad, etc.
- Program support available at 1-800-CHEMCAD or over the internet.

THERMODYNAMICS AND PHASE EQUILIBRIUM

The CHEMCAD thermodynamics system has been applied to a very wide range of processes and thermodynamic applications ranging from gas plants and refineries to fine chemicals. The methods and techniques available in the program are summarized below.

- **Hydrocarbons**: Peng-Robinson, Soave-Redlich-Kwong, API Soave, Grayson-Streed, Maxwell-Bonnell, BWRS, K-Charts, Regular Solution
- **Chemicals**: NRTL, UNIQUAC, Wilson, UNIFAC, Margules, Van Laar, Chien-Null, 4-parameter equation of state, ESD, SAFT
- **Polymers**: UNIFAC for polymers, Flory-Huggins, ESD
- **Electrolytes**: Pitzer, MNRTL(1982), MNRTL(1986), and ideal.
- **Special Systems**: amines, sour water, methanol, ethane-ethylene, propane-propylene, partial pressure (Ionic)
- **Others**: Henry's Gas Law, vapor pressure, User K tables

OTHER THERMODYNAMIC FEATURES

- Pure component physical properties databank of 1900 compounds (from DIPPR)
- Handles multiple liquid phases
- Group contribution methods available for physical properties and mixture properties estimation
- Data fitting facilities provided
- Predicts VOC emissions

UNIT OPERATIONS

- **Node** – point in the piping network where pressure change occurs for some specified reason. Other UnitOps go to and from nodes.
- **Pipe** – models the pressure drop through a pipe segment or set of segments. A wide variety of pressure drop methods are available for both single and two-phase flow.
- **Pump** – to move incompressible flow. Performance curve can be entered.
- **Compressor/Expander** – to move incompressible flow. Performance curve can be entered.
- **Flash** – for phase separation under specified conditions.
- **Valve** – simple valve for specifying outlet pressures, pressure drops, etc.
- **Control valve** - comprehensive valve module for calculating pressure drops and/or flow through the valve based upon valve size and characteristics, flow conditions, and material properties.

ADDITIONAL EQUIPMENT FACILITIES

- Fittings and elbows – a library of fittings and elbows is provided with PIPE. Flow resistance may also be entered as L/D.
- Commercial pipe schedules are built into the program.
- Equipment sizing routines are provided for orifices, pipes, valves, and pressure vessels.
- Equipment spec sheets are provided and can be customized.
- Purchase and installed costs of major equipment can be estimated.
- Equipment symbols can be added or customized by the user.
- Vapor venting depressurizing facility provided.

FLUID FLOW METHODS

- **Darcy-Weisbach Equation** – for single phase flow either compressible or incompressible.
- **Baker Method** – for two phase flow. Determines if the flow is dispersed, bubble, slug, stratified, plug, annular or wave flow and applies appropriate equation.
- **Beggs and Brill Method** – for two phase flow. Identifies the flow as segregated, intermittent, distributed, or transition flow to select correct equation parameters.
- **Isothermal flow equation** – for long distance transmission lines.
- **Hazen-Williams equation** – for water sprinkler fire protection systems.
- **Fritzsche equation** – pressure drop formula for steam systems.
- **Critical flow** – Critical flow of compressible fluids is always detected and reported. At the user's option, it will limit flow.

DIERS (DATA INSTITUTE FOR EMERGENCY RELIEF SYSTEMS)

- Design and rating of relief valves and/or rupture disks.
- Bubbly, churn-turbulent, and homogeneous vessel models.
- HEM, ERM, Henry-Fausk HNE ,non-flashing liquid and single phase vapor vent flow models.
- API-520/52, API-2000, OSHA 1910.116, and NFPA-30 fire models, or specified heat rate.
- Inlet and outlet piping pressure drop calculations.
- Comprehensive vessel and relief vent specification capabilities.
- Atmospheric and pressure vessels.

AVAILABILITY

- Stand-alone on individual PC's
- Via Local Area Network (LAN)
- Over the internet on a pay-as-you-go basis



2901 Wilcrest Drive, Suite 305 • Houston, Texas 77042 • USA • Telephone (713) 978-7700 • FAX (713) 978-7727

Chemstations-Europe

(Chemstations Deutschland GmbH) • Augustastrasse 12 • D-46483 Wesel • Germany • Telephone (49 281) 33991-0 • FAX (49 281) 33991-33

Chemstations-East Europe & Scandinavia

(Nor-Par A.S.) • Nordstrandvn 76 • 1164 Oslo • Norway • Telephone (47 22) 286-900 • FAX (47 22) 286-981

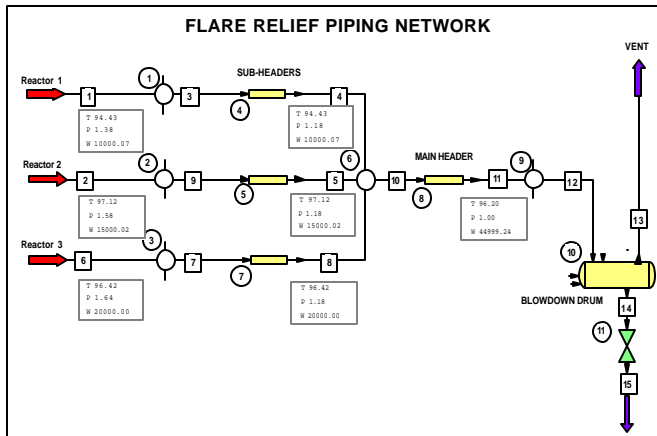
Chemstations-Japan

3-18-48 Komatsu • Tsuchiura-shi, I Ibaraki • Japan • Telephone (81 298) 23-4071 • FAX (81 298) 26-0789

CHEMCAD™ SAFETY NET

*Focusing the power
of CHEMCAD on
plant safety and
piping networks.*

CC-SAFETY NET is an engineering software tool designed to simulate the steady state behavior of pressure relief devices and piping systems under actual flowing conditions. It also provides powerful facilities for environmental audits in the prediction of volatile organic compound (VOC) emissions to atmosphere at equilibrium conditions.



FLARE SYSTEMS:

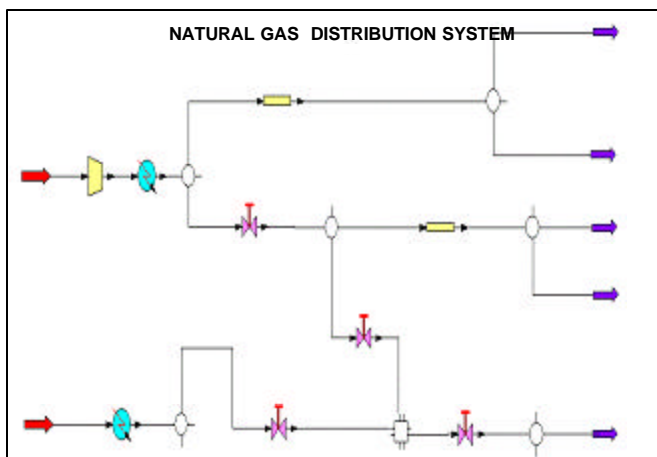
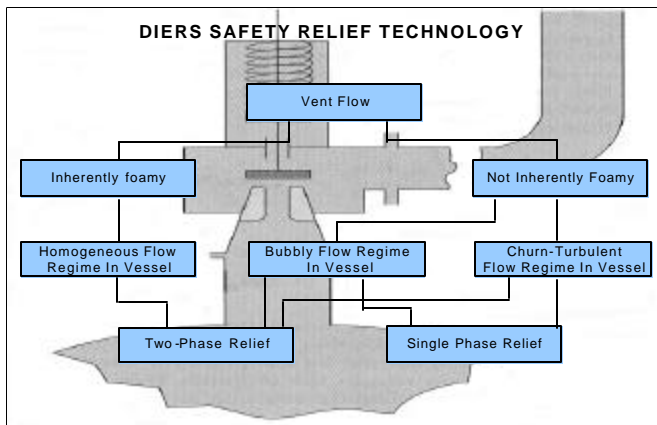
CC-SAFETY NET provides facilities for the design and analysis of flare relief systems including all system components. These facilities include:

- Simulation of the piping network including the blowdown drum. Flow can be vapor, liquid, or two-phase, and critical flow is computed and limiting.
- Identification of the worst relieving case using case studies.
- Optimization of the system using the of sensitivity analysis.
- Sizing (and costing) of system equipment including pipes, relief valves, and pressure vessels.

SAFETY RELIEF VALVES AND RUPTURE DISKS:

The **DIERS** (Design Institute for Emergency Relief Systems) facility of **CC-SAFETY NET** provides the user with the latest technology in the sizing and analysis of safety relief vents in emergency situations. This technology is complex and difficult for the average engineer to understand and apply. **CC-SAFETY NET** ensures that you get reliable results because:

- Chemstations has spent years studying DIERS and consulting with experts in the field. We are thus able to provide you with a tool which is not only comprehensive and accurate, but which also separates the useable from the purely theoretical providing you with a practical, real world tool.
- **CC-SAFETY NET's** **DIERS** facility has been used in the field for years.



PIPING NETWORKS:

CC-SAFETY NET will simulate any type of steady state piping network. Flow loops, distribution systems, and collection networks can all be assembled and simulated in any combination. These networks can also include:

- Pumps, compressors, expanders, valves, pipes, fittings, heat exchangers, and pressure vessels.
- Performance curves for pumps and compressors.
- Critical flow restrictions.
- Sizing and costing of all components.



Visit our website at:
www.chemstations.net



GENERAL FEATURES

- Graphical user interface with "Coach" facility for guided input.
- Extensive on-line Help available.
- Extensive drawing facilities
- Fully integrated with CHEMCAD and all other CHEMCAD modules.
- OLE, COM, and Visual Basic compatible.
- Interfaces to Lotus 1-2-3, Excel, and AutoCAD (DXF), Word, Wordpad, etc.
- Program support available at 1-800-CHEMCAD or over the internet.

THERMODYNAMICS AND PHASE EQUILIBRIUM

The CHEMCAD thermodynamics system has been applied to a very wide range of processes and thermodynamic applications ranging from gas plants and refineries to fine chemicals. The methods and techniques available in the program are summarized below.

- **Hydrocarbons:** Peng-Robinson, Soave-Redlich-Kwong, API Soave, Grayson-Streed, Maxwell-Bonnell, BWRS, K-Charts, Regular Solution
- **Chemicals:** NRTL, UNIQUAC, Wilson, UNIFAC, Margules, Van Laar, Chien-Null, 4-parameter equation of state, ESD, SAFT
- **Polymers:** UNIFAC for polymers, Flory-Huggins, ESD
- **Electrolytes:** Pitzer, MNRTL(1982), MNRTL(1986), and ideal.
- **Special Systems:** amines, sour water, methanol, ethane-ethylene, propane-propylene, partial pressure (Ionic)
- **Others:** Henry's Gas Law, vapor pressure, User K tables

OTHER THERMODYNAMIC FEATURES

- Pure component physical properties databank of 1900 compounds (from DIPPR)
- Handles multiple liquid phases
- Group contribution methods available for physical properties and mixture properties estimation
- Data fitting facilities provided
- Predicts VOC emissions

UNIT OPERATIONS

- **Node** – point in the piping network where pressure change occurs for some specified reason. Other UnitOps go to and from nodes.
- **Pipe** – models the pressure drop through a pipe segment or set of segments. A wide variety of pressure drop methods are available for both single and two-phase flow.
- **Pump** – to move incompressible flow. Performance curve can be entered.
- **Compressor/Expander** – to move incompressible flow. Performance curve can be entered.
- **Flash** – for phase separation under specified conditions.
- **Valve** – simple valve for specifying outlet pressures, pressure drops, etc.
- **Control valve** - comprehensive valve module for calculating pressure drops and/or flow through the valve based upon valve size and characteristics, flow conditions, and material properties.

ADDITIONAL EQUIPMENT FACILITIES

- Fittings and elbows – a library of fittings and elbows is provided with PIPE. Flow resistance may also be entered as L/D.
- Commercial pipe schedules are built into the program.
- Equipment sizing routines are provided for orifices, pipes, valves, and pressure vessels.
- Equipment spec sheets are provided and can be customized.
- Purchase and installed costs of major equipment can be estimated.
- Equipment symbols can be added or customized by the user.
- Vapor venting depressurizing facility provided.

FLUID FLOW METHODS

- **Darcy-Weisbach Equation** – for single phase flow either compressible or incompressible.
- **Baker Method** – for two phase flow. Determines if the flow is dispersed, bubble, slug, stratified, plug, annular or wave flow and applies appropriate equation.
- **Beggs and Brill Method** – for two phase flow. Identifies the flow as segregated, intermittent, distributed, or transition flow to select correct equation parameters.
- **Isothermal flow equation** – for long distance transmission lines.
- **Hazen-Williams equation** – for water sprinkler fire protection systems.
- **Fritzsche equation** – pressure drop formula for steam systems.
- **Critical flow** – Critical flow of compressible fluids is always detected and reported. At the user's option, it will limit flow.

DIERS (DATA INSTITUTE FOR EMERGENCY RELIEF SYSTEMS)

- Design and rating of relief valves and/or rupture disks.
- Bubbly, churn-turbulent, and homogeneous vessel models.
- HEM, ERM, Henry-Fausk HNE ,non-flashing liquid and single phase vapor vent flow models.
- API-520/52, API-2000, OSHA 1910.116, and NFPA-30 fire models, or specified heat rate.
- Inlet and outlet piping pressure drop calculations.
- Comprehensive vessel and relief vent specification capabilities.
- Atmospheric and pressure vessels.

AVAILABILITY

- Stand-alone on individual PC's
- Via Local Area Network (LAN)
- Over the internet on a pay-as-you-go basis



2901 Wilcrest Drive, Suite 305 • Houston, Texas 77042 • USA • Telephone (713) 978-7700 • FAX (713) 978-7727

Chemstations-Europe

(Chemstations Deutschland GmbH) • Augustastrasse 12 • D-46483 Wesel • Germany • Telephone (49 281) 33991-0 • FAX (49 281) 33991-33

Chemstations-East Europe & Scandinavia

(Nor-Par A.S.) • Nordstrandvn 76 • 1164 Oslo • Norway • Telephone (47 22) 286-900 • FAX (47 22) 286-981

Chemstations-Japan

3-18-48 Komatsu • Tsuchiura-shi, I Ibaraki • Japan • Telephone (81 298) 23-4071 • FAX (81 298) 26-0789